



Torrens Title Duplex / Semi-Detached

\$695,000

Genuine Turnkey

Absolutely nothing more to spend to move your family into this home!

Perfect for the first home buyer or savvy investor, let us build your dream home, and save up to \$45,000 (subject to approval).

This instantly appealing and impressive two-level duplex is superbly located to enjoy all of Camden and Elderslie's conveniences. The family will enjoy the parks, cycle ways, schools and shopping village nearby.

The ground level reveals a separate formal lounge / living room, a study or optional fourth bedroom, and spacious living and dining area flowing out to the alfresco, great for entertaining your family and guests. The well-appointed kitchen with Smartstone bench tops, internal laundry, third bathroom and garage with internal access complement the life-style package.

The upper level features three generous bedrooms with built in wardrobes, master bedroom with walk-in robe and ensuite, and main bathroom. It's a ready-made family haven of space and comfort. You could not ask for a better location to begin your journey as a family.

SPECIAL Features:

- Including the Everyday, Gourmet and Bathroom Lifestyle Upgrade Packages – see Inclusions listing for details
- Fully ducted air conditioning
- Quality tiles and carpet to all living areas
- Quality tiles to porch and alfresco
- Smartstone to kitchen benchtops
- 900 mm Westinghouse freestanding stove with matching rangehood
- Polymarble bench tops to vanities
- Free standing bath
- Semi-frameless shower screens
- Niches to showers
- Coloured concrete driveway



House Details

| | |
|--------------|-----------------------|
| Ground Floor | 85.36 m ² |
| First Floor | 81.59 m ² |
| Alfresco | 7.96 m ² |
| Porch | 6.34 m ² |
| Garage | 17.96 m ² |
| Stair Void | 5.20 m ² |
| House Size | 204.71 m ² |

| | |
|--------------|----------|
| House Width | 6.425 m |
| House Length | 19.550 m |



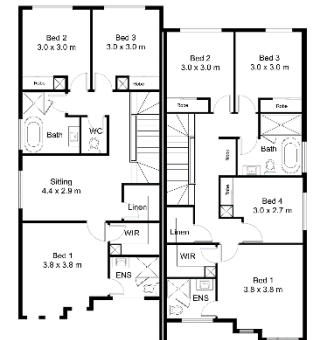
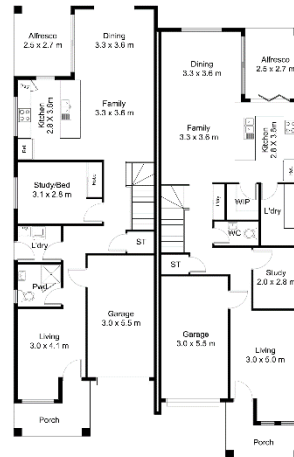
Room Sizes

Ground Floor

| | |
|---------------|-------------|
| Kitchen | 3.6 x 2.8 m |
| Dining | 3.6 x 3.3 m |
| Family | 3.6 x 3.3 m |
| Living | 4.1 x 3.0 m |
| Study / Bed 4 | 3.0 x 2.8 m |
| Alfresco | 2.8 x 2.7 m |
| Garage | 5.5 x 3.0 m |

First Floor

| | |
|---------|-------------|
| Bed 1 | 3.8 x 3.8 m |
| Bed 2 | 3.0 x 3.0 m |
| Bed 3 | 3.0 x 3.0 m |
| Sitting | 4.4 x 2.9 m |



GROUND FLOOR

FIRST FLOOR

