

Kyneton



House and Land Package

from \$649,900*

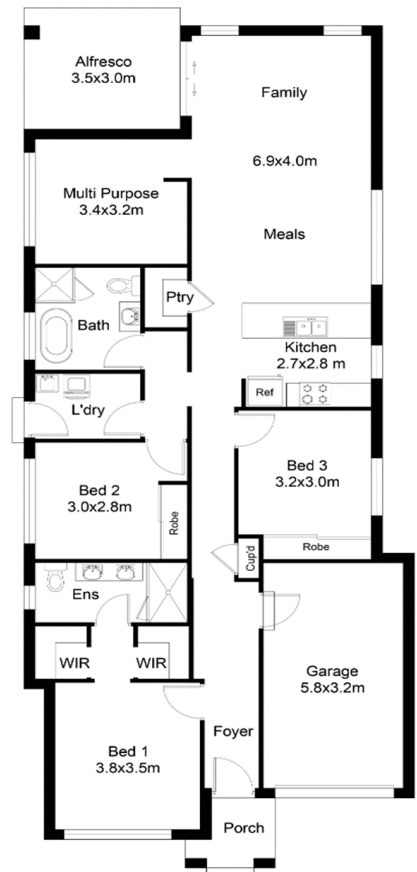
Lot 7096, 65 Jennings Crescent, Spring Farm

- 3-bedroom single storey home
- 2 facades to choose from
- **Priced ready to move in**

Features

- Concrete slab
- Ceiling height 2.65 m
- Colorbond roof
- Ducted air conditioning
- Gourmet-style kitchen
- Dual fuel 900 mm freestanding cooker
- Tiles to entry, kitchen, meals, family, wet areas, porch and alfresco
- Carpet to bedrooms and media
- Freestanding bath
- Shower niches
- All vents ducted to outside
- Foil-backed blanket to underside of roof
- Drive-through garage
- Driveway – coloured concrete

Land Size: 300 m²
House Length: 21.920 m
House Width: 8.720 m
House Size: 169.17 m²



Instyle Homes Group Pty Ltd

P: 02 4647 8307 | E: office@ishg.com.au |

W: www.instylehomesgroup.com.au |



* Please note: All pictures / drawings are for illustrative purposes and should be used as a guide only. Pricing may vary depending on specific design, site, BASIX requirements, final selections and fixtures.